

# DISCOVER YOUR VISION™ EQUINE INSPIRED WORKSHOP

REDTAIL FARM

26827 SE 216TH ST

MAPLE VALLEY, WA 98038



*Facilitator:* Rachel Dexheimer, CECE  
*Cell:* 425-495-6584  
*Email:* [rachel@equispire.net](mailto:rachel@equispire.net)

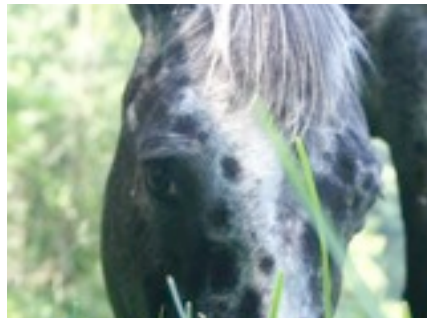


*Facilitator:* Amoráh Ross, MCC  
*Cell:* 425-241-3151  
*Email:* [amorah@amorah.com](mailto:amorah@amorah.com)

## Is it time to live fully from your authentic self?

Combining the proven process of Discover Your Vision™ with the powerful partnership of facilitated horse interactions, this workshop helps you unlock your essential self for greater success sourced from the 'inside-out' and greater fulfillment from your endeavors.

- Are you ready to tap into your inner wisdom, guidance, power and passion?
- Do you want to foster the spiritual principles of wholeness and balance?
- Discover Your Vision™ is a personal development process for individuals who are:
  - Eager to live a more vital, thriving, & passionate life
  - Seeking clarity about what is next in their life & how to transition toward it
  - Looking for more life fulfillment & satisfaction
  - Ready to initiate & embrace change
- By coupling this process with a relationship with a horse, you:
  - Increase self-awareness
  - Improve communication with others
  - Create a window for yourself as others see you
  - Recognize & manage team dynamics and structures
  - Identify leadership characteristics and how to apply them
- Horses make their decisions using their innate wisdom; this creates a unique setting for deep & profound personal development. For example, they will tell you when you're acting with integrity, respect and inspiration
- Through the eyes of a horse there is no judgement, no 'have to,' no question of your worthiness, only acceptance



A workshop co-  
created by  
Rachel Dexheimer



and  
Amoráh Ross

Positive Life Works™  
Claim Personal Clarity... Unleash your Authentic Self... Activate your Life's Purpose

***"There are two ways to live your life -  
one is as though nothing is a miracle,  
the other is as though everything is a miracle."***

~Albert Einstein

### Claim personal clarity

- Clearly articulate your values and guiding principles in alignment with your essential self & life purpose
- Experience first-hand the transformative power of living from the inside-out
- Create a tool for self-empowerment

### Unleash your authentic self

- Explore your essential self through profound processes and exercises
- Give language to the expression of your personal vision and fundamental life purpose
- Begin to craft a values- and purpose-guided life

### Activate your life's purpose

- Make profound and lasting choices in alignment with your core values
- Produce and sustain extraordinary positive results while appreciating the quality of your life's journey
- Balance your work and personal life through transformative living

### Why horses?

- Horses thrive in highly organized and complex herds very similar to our own societal structures
- Their survival depends on acute awareness & ability to intuit the emotional states of those around them
- Horses effectively mirror not only our emotions and intentions, but also our hierarchies
- You practice interacting within complex dynamics that mirror human relationships with the advantage of honest, real-time feedback
- You are able to explore new skills and practice them to effectively integrate them into your life
- We now have the privilege of partnering with these remarkable creatures; to honor them for helping us see the world through different eyes and to deepen our understanding of ourselves
- We have the profound opportunity to expand our comprehension beyond our linear lenses and to learn to walk in the world with greater balance
- Horses can help us find harmony with them and, therefore, with ourselves

**Please join us! Space is limited to 6 people per class**

**WHEN:** June 12-14 2009 OR ■ August 14-16 2009 OR ■ October 9-11 2009

FRIDAY 1:00 p.m. - 5:00 p.m.; SATURDAY and SUNDAY 9:00 a.m. - 5:00 p.m.

**WHERE:** Redtail Farm ■ 26827 SE 216TH ST ■ Maple Valley WA 98038

**TUITION:** \$575 per person [Includes materials, facilitation, follow-up conference call and horse interactions]

**TO REGISTER:** CALL OR EMAIL Rachel : 425-495-6584 ■ [rachel@equispire.net](mailto:rachel@equispire.net)

PAYMENT IN FULL IS DUE UPON REGISTRATION